



# iConnect Interface

---

## Universal Hospitality Middleware

Offer the hotel a new standard of comfort, entertainment and interactive services.

## Telephone Interface Manual

iConnect Version: V.2.6

Reference No.: TEL-V.26-202304

# 1 INTRODUCTION

iConnect Interface V2.6 is a client/server application intended for the hospitality industry. It combines communication features of the IP/Hybrid PBX system with a hotel services application package that can interface with

- PMS (Hotel Property Management Systems)
- Call Accounting Systems
- VMS (Voice Mail Systems)
- etc.

iConnect Interface V2.6 optimizes telephony at the hotel workstation and makes use of the integration capabilities offered by central data resources. It offers various hospitality industry features:

- Service tracking
- Call control center
- Customer relationship management

The range of functions can be adapted to customer requirements and conditions of use by acquiring different licenses.

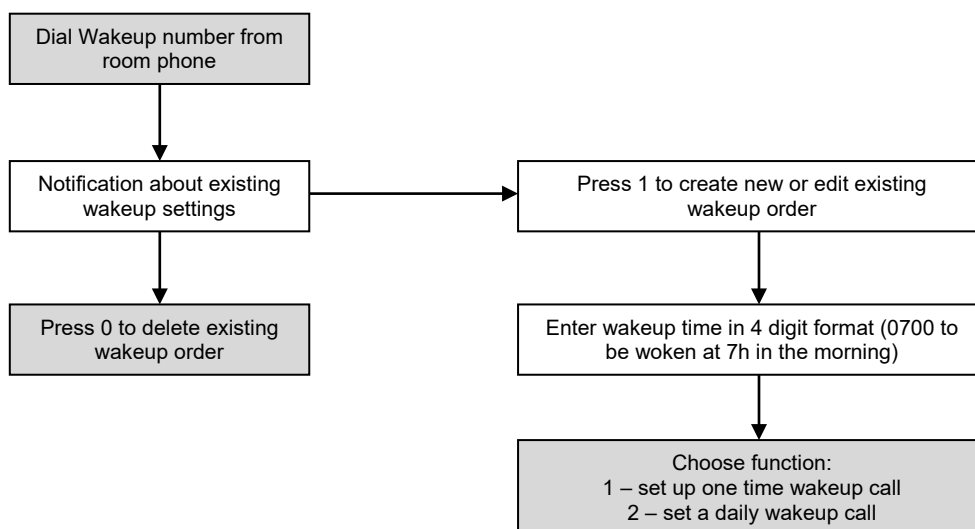
iConnect is intended for medium to large hotels as well as for hotel chains. It supports the Front Office Client, Tablets or laptop consoles for guests and Tablet devices for hotel staff members. Hotel staff can also use a CMI (Cordless Multicell Integration) or an SIP telephone instead of a Tablet device.

This manual contains help and provides information regarding the performing the operation on the guest phone.

## 2. USER MANUAL

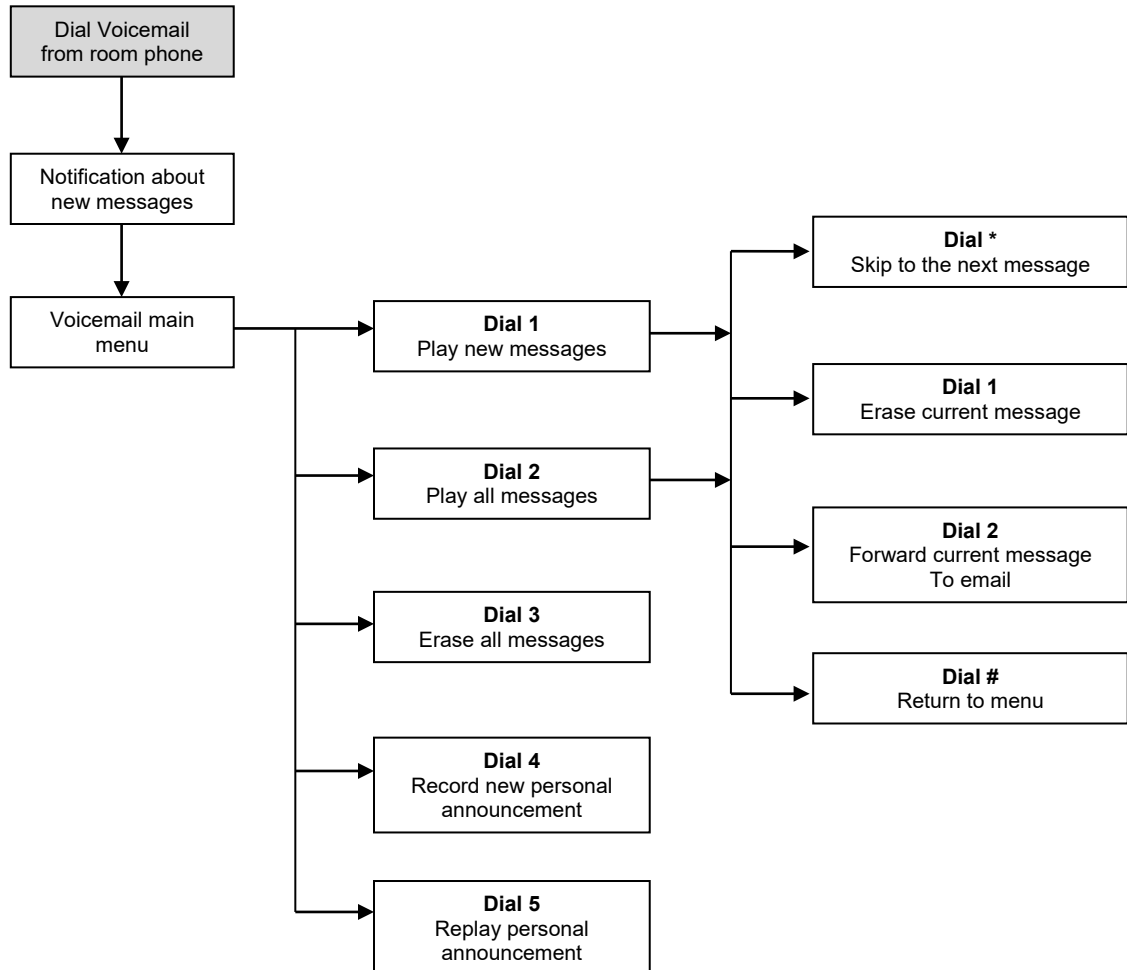
### 2.1 Guest Wakeup menu

Perform the operation on the guest phone in the sequence below:



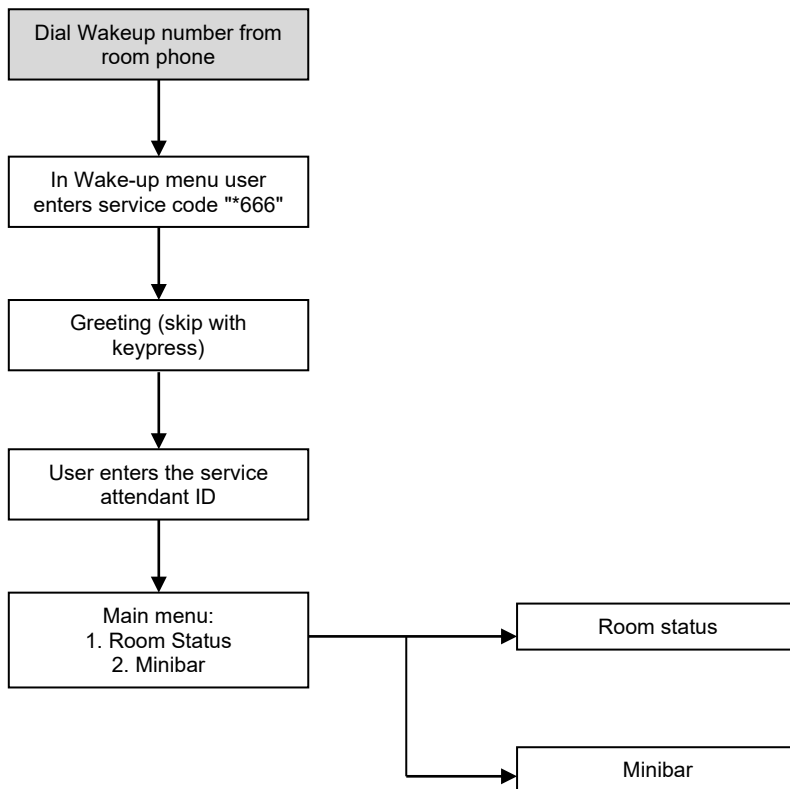
## 2.2 Guest or staff voicemail menu

Perform the operation on guest phone in the sequence below:



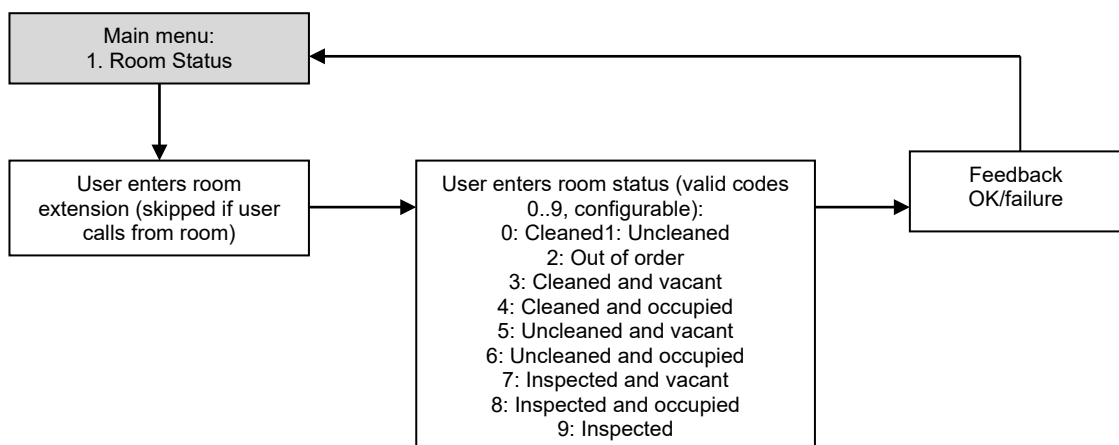
## 2.3 Service access from wakeup menu

Perform the operation on the guest phone in the sequence below:



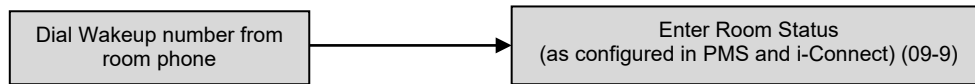
## 2.4 Room status access from guest wakeup menu

Perform the operation on the guest phone in the sequence below:



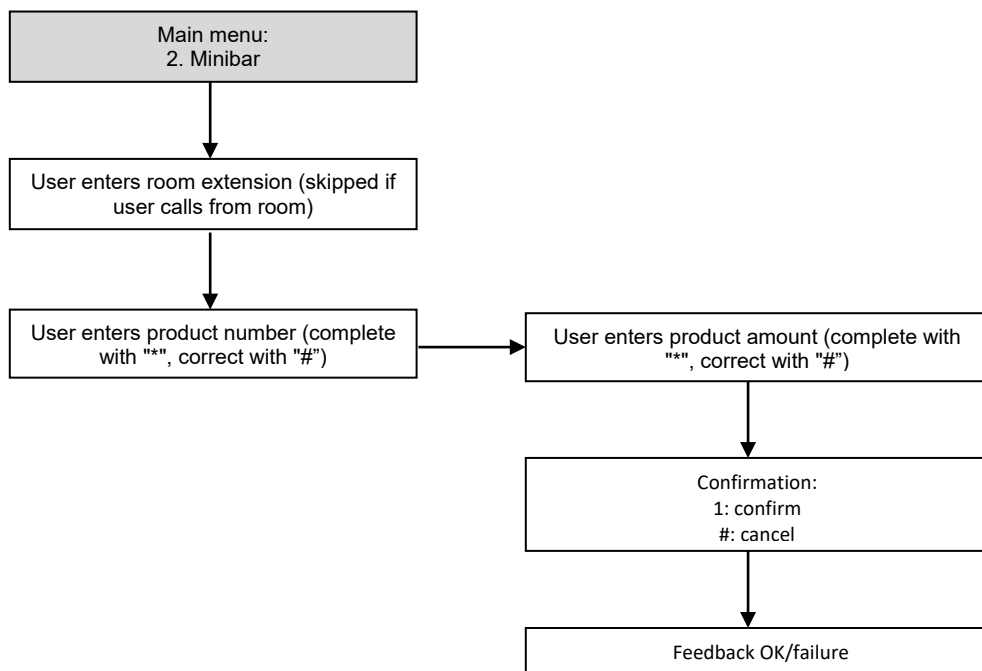
## 2.5 Direct room status access

Perform the operation on the guest phone in the sequence below:



## 2.6 Minibar posting from Guest wakeup menu

Perform the operation on the guest phone in the sequence below:



### **3. COMPATIBILITY**

iConnect Interface V2.6 is universal hospitality middleware. It provide superior connectivity with almost all Front Office System (PMS) and PBX System via LAN.

The information provided in this document contains merely general descriptions or characteristics of performance which in case of actual use do not always apply as described or which may change as a result of further development of the product. An obligation to provide the respective characteristics shall only exist if expressly agreed in the terms of contract. Availability and technical specifications are subject to change without notice.

All other company, brand, product and service names are trademarks or registered trademarks of their respective holders.

All rights reserved.

Reference No.: TEL-V.26-202304

This document, or any part of it, may not be reproduced, copied, circulated and/or distributed nor quoted without prior written approval from Unitysofts.